



VENUE GUIDE

Cockatoo Island / Wareamah Sydney Harbour





ACKNOWLEDGEMENT

The Harbour Trust acknowledges the Traditional Custodians of the lands, waters, and sky of Sydney Harbour, and of the sites under our stewardship: the Borogegal, Birrabirrigal, Cammeraygal, Gadigal, Gayamagal, Wallumedegal and Wangal peoples.



CONTENTS

INTRODUCTION	5	BUILDING 140	18	MOULD LOFT (UPPER FLOOR)	28
EVENTS AND ACTIVATIONS	6	BUILDING 142	19	MOULD LOFT (STUDIO SPACE)	29
VENUE SUMMARY BY PRECINCT	7	BUILDING 143 (PUMP HOUSE)	20	CONVICT PRECINCT	30
OVERVIEW AND CONSIDERATIONS	8	EASTERN APRON	22	COURTYARD (ENCLOSED)	30
INDUSTRIAL PRECINCT	10	BUILDING 124 (NAVAL STORE)	24	COURTYARD (GRASSED)	31
BUILDING 150 (TURBINE SHOP)	12	BOLT WHARF	25	BUILDING 3 (MESS HALL)	32
BUILDING 138 (CONVICT WORKSHOPS)	14	DOG LEG TUNNEL	26	BUILDING 4 (INFIRMARY/ CAMPGROUND CINEMA)	33
BUILDING 137	16	SHIP DESIGN PRECINCT	27	BILOELA LAWN	34
BUILDING 153 (BLADE ROOM)	17	MOULD LOFT (MAIN FLOOR)	27		



Legend

→ → Suggested pathway trail: Lower Island → → Suggested pathway trail: Upper Island

Orange circle icon: Structures that form part of the Australian Convict Sites, UNESCO World Heritage Listing

Blue wheelchair icon: Accessible toilets

Blue bed icon: Accommodation

Blue baby change icon: Baby change facilities

Blue picnic table icon: Campground kitchen (for use by campground guests only)

Blue BBQ icon: BBQ

Red fork and knife icon: Café

Blue anchor icon: Camber Wharf

Blue boat icon: Cockatoo Boat Storage

Blue boat with flag icon: Cockatoo Island Wharf

Blue group of people icon: Conference centre

Red heart with cross icon: Defibrillator (AED)

Red triangle with 'E' icon: Emergency assembly point

Blue ticket icon: Ferry tickets

Blue flame icon: Firepit

Red cross icon: First aid

Green 'G' icon: Gallery and exhibition space

Blue padlock icon: Lockers

Blue camera icon: Lookout

Green 'F' icon: Public ferry

Blue shower icon: Showers

Blue person with umbrella icon: Ranger/Security office

Blue stairs icon: Stairs

Blue toilet icon: Toilets

Orange tunnel icon: Tunnel

Blue vending machine icon: Vending machine

Red 'i' icon: Visitor centre

Blue hammer icon: Volunteer workshops

Blue water tap icon: Water fountain

INTRODUCTION

Located in the heart of Sydney Harbour, Cockatoo Island connects to the waterways and homelands of the Wallumedegal, Wangal, Cammeraygal and Gadigal peoples. They have the Dharug language in common and, in Dharug, Cockatoo Island is known as Wareamah.

During the 19th and 20th centuries, the island's landscape changed dramatically as it was reshaped for different uses; namely, it hosted a convict penal establishment, a shipbuilding and ship repair facility, and educational institutions for boys and girls.

As a result of these colony-led developments, signs of the island's historic use by Sydney's First Nations peoples are no longer visible; however, it continues to hold significance for the Traditional Custodians and Owners. Indeed, artworks on the upper island – including a mural on the timber shed – speak to a brief period in the early 2000s when an Aboriginal rights group led by Wiradjuri woman Isabel Coe established a camp on the island, claiming it for all Aboriginal people. After the group's land claim was rejected by the NSW Supreme Court, they left peacefully.

Today, Cockatoo Island is a source of inspiration due to its historic landmarks, award-winning accommodation, and other popular attractions. A major drawcard is the UNESCO World Heritage listed Convict Site, which provides a window into the era when re-offending male convicts were imprisoned on Cockatoo Island and put to work on the colony's building projects.

Another drawcard is the former dockyard, which facilitated significant naval activity during the First World War and, during the Second World War, served as the Allies' main ship repair facility in the South Pacific. Further highlights

include a waterfront campground, licensed cafés, holiday houses and apartments, guided and self-guided tours and exciting seasonal events. A visitor centre is located near the main entrance, with knowledgeable volunteers on hand to greet guests as they arrive and help them have a great day out.

Situated at the junction of the Parramatta and Lane Cove Rivers, Cockatoo Island is accessible by public ferry, with services departing from Circular Quay, Barangaroo and wharves along Parramatta River.



EVENTS AND ACTIVATIONS

Already a place for connection and celebration on Sydney Harbour, Cockatoo Island will continue to be the Harbour Trust's primary site for activations and events attracting both domestic and international visitors.

The Harbour Trust's priorities for events and activations on Cockatoo Island are for development of partnerships and acquisition

of events for experiences focusing on flagship Sydney events, First Nations, culture and creativity and contemporary heritage.

Cockatoo Island has become renowned as a major contemporary art, conferences, events and activations venue with major cultural events such as Biennale Sydney, to more recent live events like Red Hot Summer Tour, MODE Festival and Opera Australia's production of Carmen in 2022.

Cockatoo Island is a great backdrop to filming activities and has been used by productions such as Celebrity Apprentice and Ten Pound Poms, along with movies such as Wolverine and Unbroken.



Images (clockwise from left): Opera Australia's Carmen – Bolt Wharf (Opera Australia, Photographer: Hamilton Lund), Mode Festival – Industrial Precinct (Bizzarro; Instagram) Supercars Media Launch 2023 – Eastern Apron (TLA)



VENUE SUMMARY BY PRECINCT

The island encompasses distinct precincts, all with their own unique history and character, which are available for venue hire as a whole or as individual spaces.

BUILDING	AREA (M ²)	CAPACITY		SURFACE	POWER	TOILETS	WATER
		STANDING (PAX)	THEATRE STYLE (PAX)				
INDUSTRIAL PRECINCT							
Building 150 (Turbine Shop)	2,090	2,500	1,000	Concrete	✓	✓	✓
Building 138 (Convict Workshops)	773	1,500	500		✓	✗	✗
Building 137	717	875	Subject to event		✓	✗	✗
Building 153 (Blade Room)	294	100	50		✓	✗	✗
Building 140	1,392	2,000	600		✓	✗	✗
Building 142	376	500	250		✓	✗	✗
Building 143 (Pump House)	380	350	100		✗	✗	✗
EASTERN APRON							
	15,000	6,000	Subject to event	Concrete & grass	✓	✗	✓
NAVAL STORE							
Building 124 (Naval Store)	343	200	150	Concrete	✓	✗	✓
BOLT WHARF							
	3,048	4,000	2,500	Concrete	✓	✗	✗
SHIP DESIGN PRECINCT - BUILDING 6 (MOULD LOFT)							
Main floor	680	100	100	Wood	✓	✓	✓
Upper floor	680	100	100	Carpet	✓	✓	✓
Studio space	137	50	30	Wood	✓	✓	✓
CONVICT PRECINCT							
Building 3 (Mess Hall)	132	50	30	Wood	✓	✗	✗
Courtyard (enclosed)	1,009	500	Subject to event	Gravel	✓	✗	✗
Courtyard (grassed)	737	400	Subject to event	Grass	✓	✗	✗
Building 4 (Infirmary)	60	35	35	Wood	✓	✗	✗
BILOELA LAWN							
	634	200	100	Grass	✓	✗	✓



OVERVIEW AND CONSIDERATIONS

HERITAGE SITE

Many assets are state, national and world heritage listed.

DRY HIRE

There is no on-site commercial kitchen, minimal event equipment, furniture or plant equipment. Event infrastructure will need to be brought to the island via barge.

ACCESSIBILITY

Many areas of the island are wheelchair accessible. However, there is a steep incline from the lower island to the upper plateau. Owing to the island's industrial heritage, there are uneven surfaces as well as some buildings which are not wheelchair accessible or compliant.

NOISE COMPLIANCE

A Noise Management Plan may be required depending on activity and to be in line with Cockatoo Island's Noise Management Plan.

BARGING

Operates between Woolwich barge ramp (next to Hunters Hill Sailing Club off Clarke Road Woolwich) and Camber Wharf ramp on Cockatoo Island.

For more information, please contact the Harbour Trust directly. Price is on application.

MUSIC FESTIVALS ACT

If considering a 'Music Festival' (as defined under the *NSW Music Festivals Act 2019*), the Applicant will need to complete an Early Notification Form

no later than 120 days before the event date. Independent Liquor & Gaming Authority (ILGA) will determine if the event is classed as high risk and a Safety Management Plan is required as a condition of holding your festival.

ACCOMMODATION

Cockatoo Island offers numerous options for overnight stays, from an eight-bedroom heritage house to camping facilities. For more information, visit cockatooisland.gov.au/stay.

Image: Image credit: Carmen on Cockatoo Island Media Launch 2022
(Image supplied by: Opera Australia Photographer: Rhiannon Hopley)



TRANSPORT

Public: Access via F3 and F8 Ferry services. Please note public transport runs a limited service in evenings and on weekends.

Event: Private charter vessel considered for medium and large events.

On island: Buggies can be hired through Cockatoo Island Marine Centre. All drivers are required to be inducted.

SECURITY

Harbour Trust Rangers and Security are on site 24 hours/7 days a week. Events may require additional security to support their activity.

LIQUOR PERMIT

Must be applied for through the Harbour Trust and not through Independent Liquor & Gaming Authority (ILGA).

TOILETS

Demountables may be required based on population load.

WASTE MANAGEMENT

Waste Management Plan required.
Option to use external supplier or utilise Harbour Trust contractor.

TENANTS AND ACCOMMODATION GUESTS

Impacts and access for tenants and accommodation guests must be considered.

INDUSTRIAL PRECINCT | BUILDINGS 150, 138, 137, 153, 140, 142, 143

The Industrial Precinct is historically significant as the location of the workshops for the dockyard since the opening of the Fitzroy Dock.

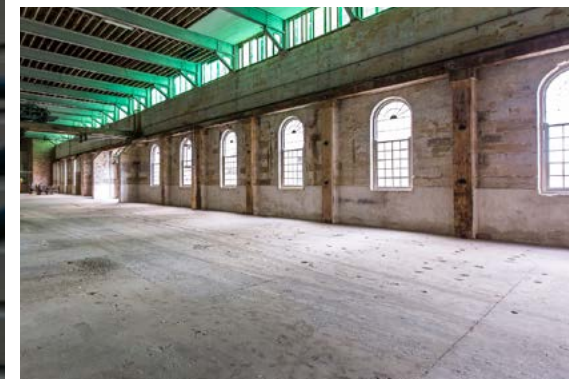
The precinct is associated with many external structures and works in New South Wales and Australia that were manufactured in these workshops and it has been one of the

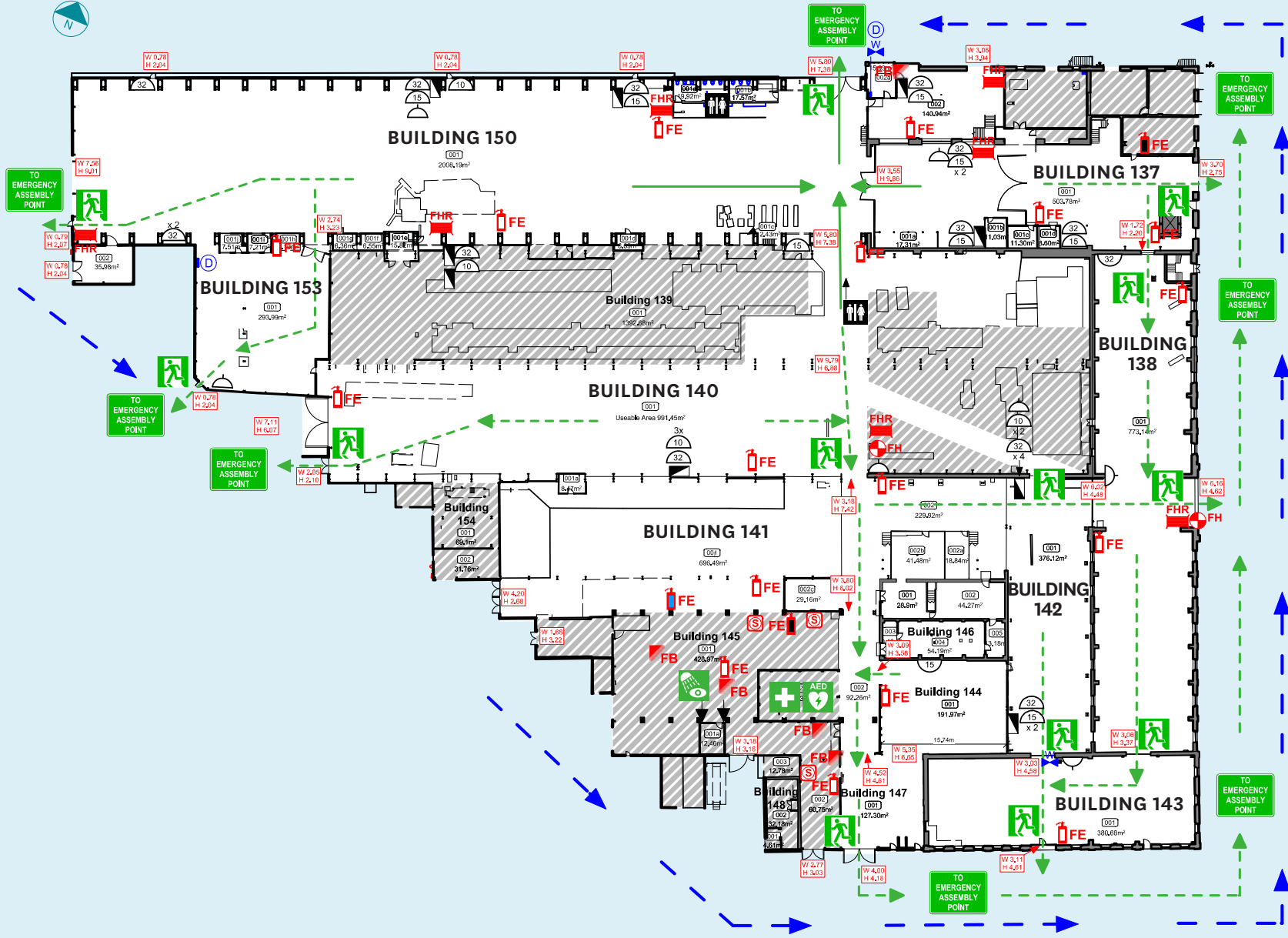
largest and most important engineering works in Australia at various times in its history.

The buildings have kept their raw industrial character with exposed steel beams, soaring ceilings featuring overhead gantry cranes, and bare concrete floors. The vast expanse of this industrial building makes an impressive backdrop for any production.

CONSIDERATIONS

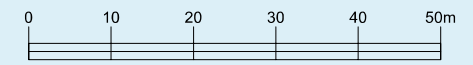
- BCA compliance
- Rigging – separate engineer report required specific to each event
- No naked flames
- Volunteer Workshop active Monday to Thursday 9am to 4pm
- Heritage asset protection – no fixing to surfaces permitted without prior approval





LEGEND

- FE Dry Powder Fire Extinguisher
- FE Co² Fire Extinguisher
- FE Foam Fire Extinguisher
- FB Fire Blanket
- FHR Fire Hose Reel
- FH Fire Hydrant
- Emergency Stop Button
- Fire Exit
- First Aid Kit
- AED Defibrillator
- Eye Wash
- Primary Escape Route
- Secondary Escape Route
- To Emergency Assembly Point
- No Public Access
- Distribution Board
- 32 Amp Outlet 3 Phase
- 15 Amp Outlet
- 10 Amp Outlet
- Light Switch
- Tap
- Potable Water Valve
- Working Sink
- Drainage
- Door Width and Height (m)
- Toilets
- Heritage Feature
- Vehicle Access Path



BUILDING 150 (TURBINE SHOP)

Building 150 (Turbine Shop) is a large sophisticated industrial space within the Industrial Precinct that is full of gritty glamour and is the largest building on Cockatoo Island.

It was part of the additions to the dockyard undertaken to expand its operations during the Second World War. In this massive space, ships' propulsion engines were assembled or repaired.

EXAMPLES OF APPROPRIATE USE

Corporate functions, gala dinners, music concerts, fashion shows, launches, conferences, exhibitions, markets, fashion shows, filming and photography.

CAPACITY

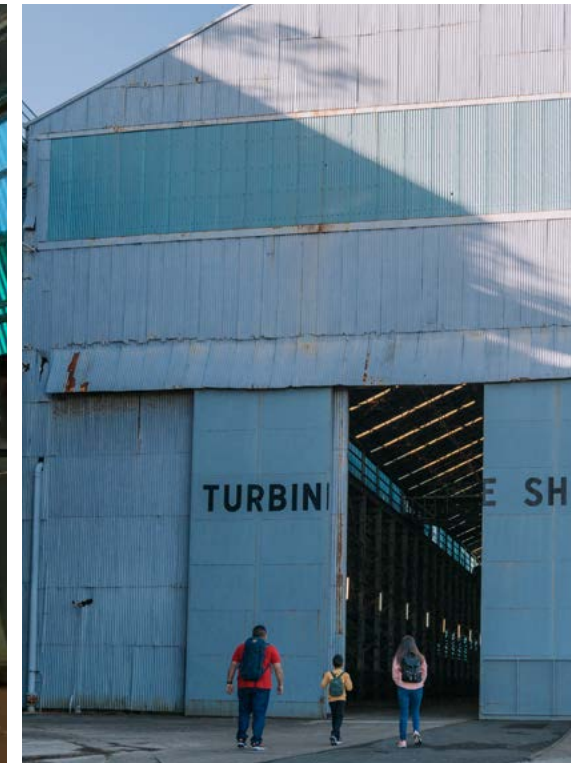
2,500 pax standing
1,000 pax theatre style

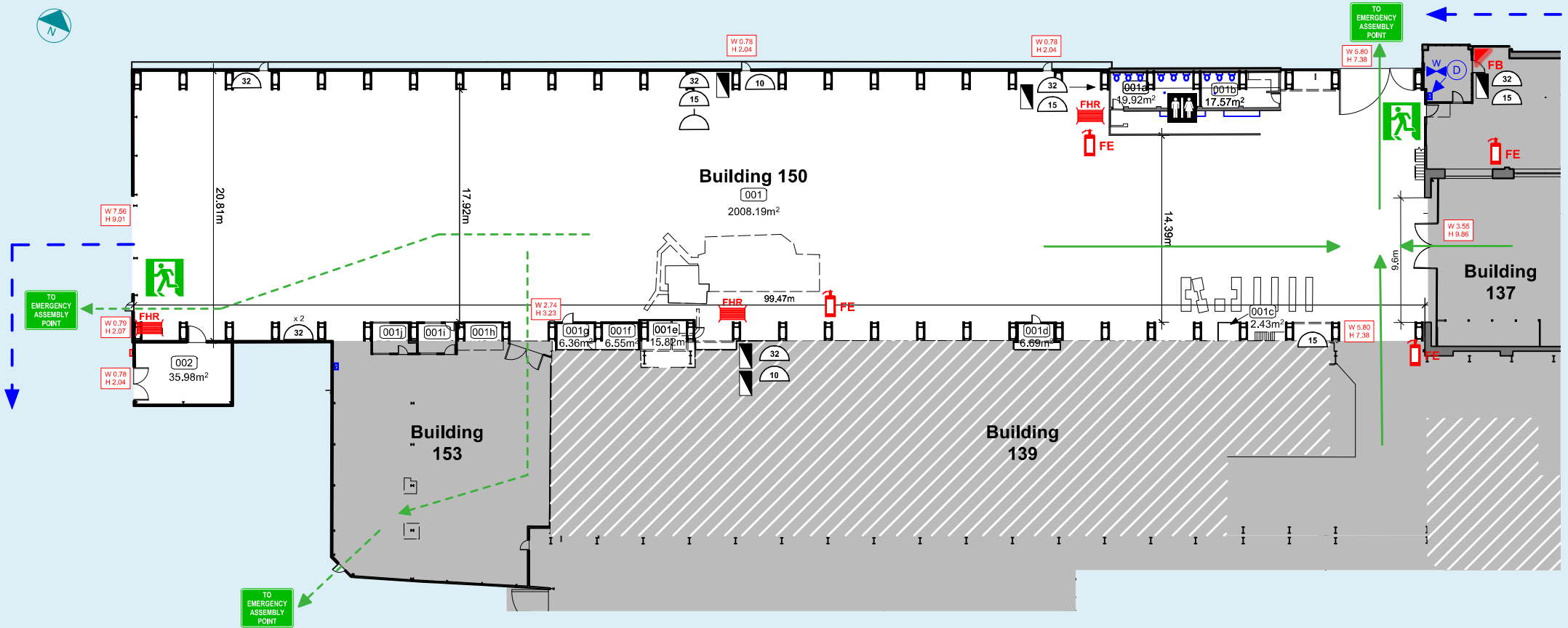
SITE SPECIFICATIONS

Surface: Concrete
Power: 1 x 15amp, 6 x 32amp
Toilets: Available
Water: Available

SIZE

Area: 2,090m²
Dimensions: 99.5m x 21m
Height clearance: 8.5m
Doors: Camber Wharf end 8.9m (h) x 7.5m (w)
Eastern Apron side 7.3m (h) x 5.9m (w)





LEGEND

FE	Dry Powder Fire Extinguisher		Secondary Escape Route		Light Switch		Toilets
	Fire Blanket		To Emergency Assembly Point		Tap		Vehicle Access Path
	Fire Hose Reel		Distribution Board		Potable Water Valve		No Public Access
	Fire Hydrant		32 Amp Outlet 3 Phase		Working Sink		Adjoining Buildings
	Fire Exit		15 Amp Outlet		Drainage		
	Primary Escape Route		10 Amp Outlet		Door Width and Height (m)		



BUILDING 138 (CONVICT WORKSHOPS)

This is one of the oldest convict buildings remaining in Sydney and one of very few British Admiralty-type buildings surviving today in Australia.

From the Steam Workshops grew all the dockyard's subsequent workshops. It became the country's most comprehensive engineering facility, associated with ship building, repair,

maintenance and general engineering undertaken on the island between 1870 and 1991.

EXAMPLES OF APPROPRIATE USE

Corporate functions, gala dinners, music concerts, fashion shows, launches, exhibitions, markets, fashion shows, filming and photography.

CAPACITY

1,500 pax standing
500 pax theatre style

SITE SPECIFICATIONS

Surface: Concrete

Power: 1 x 32amp

Toilets: Available in Buildings 150 and 119

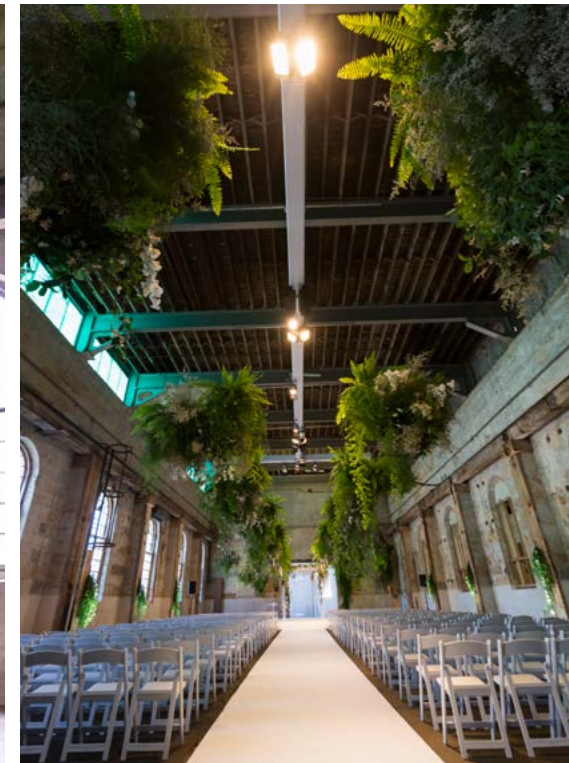
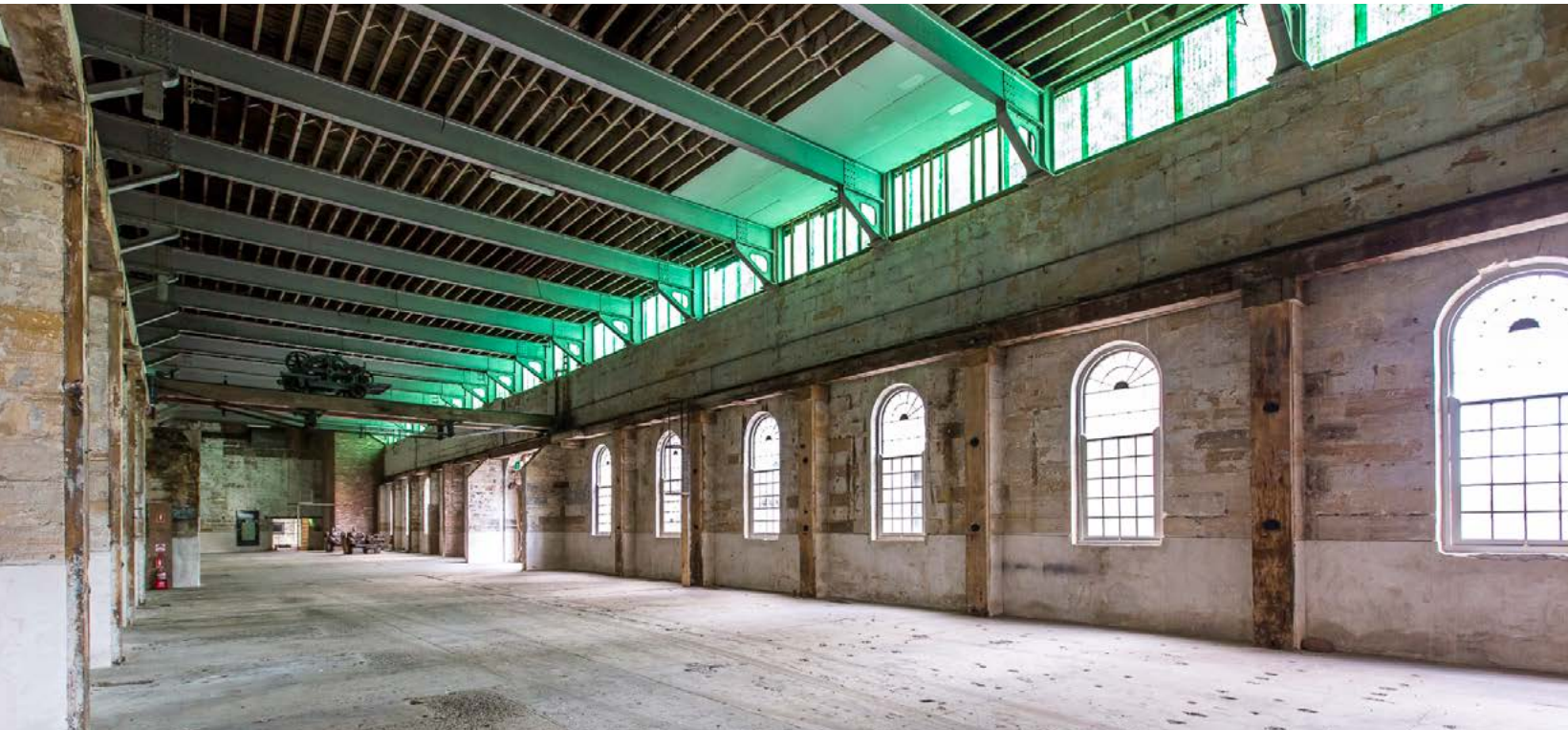
Water: Available in Building 150

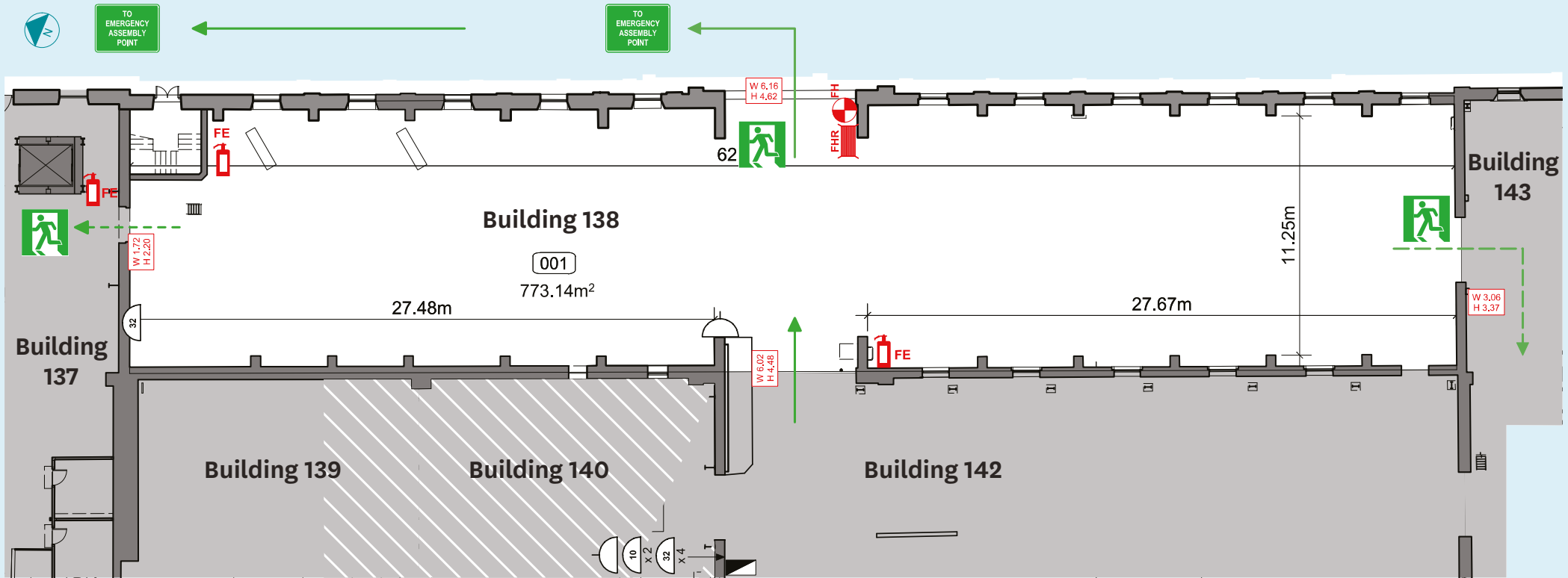
SIZE

Area: 773m²



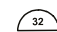



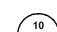







Dimensions: 62.3m x 11.3m

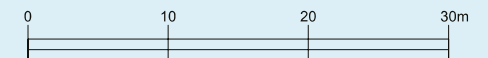
Height clearance: 8.5m





LEGEND

- | | | | |
|--|--|---|---|
|  Dry Powder Fire Extinguisher |  Primary Escape Route |  32 Amp Outlet 3 Phase |  Door Width and Height (m) |
|  Fire Hose Reel |  Secondary Escape Route |  10 Amp Outlet |  No Public Access |
|  Fire Hydrant |  To Emergency Assembly Point |  Light Switch |  Adjoining Buildings |
|  Fire Exit |  Distribution Board | | |



BUILDING 137

Like many of the workshops that once stood on the lower part of the Island, Building 137 had numerous roles over its lifetime.

It was once part of Building 138 (Convict Workshop), then it was converted to an Iron Foundry, where castings used in ship repair were made. Building 137 later became the Progress Shop and Store, where items made in the workshops were stored and checked before they were

incorporated in other machinery or sent to a ship. Other uses included a Quarantine Store (where items were quarantined if made incorrectly or from suspect materials) and a Turbine Shop Store, where materials, parts and tools were stored.

EXAMPLES OF APPROPRIATE USE

Exhibitions, launches, dinner experiences, food & beverage stalls, filming and photography.

CAPACITY

875 pax standing
Theatre style –
Subject to event type

SITE SPECIFICATIONS

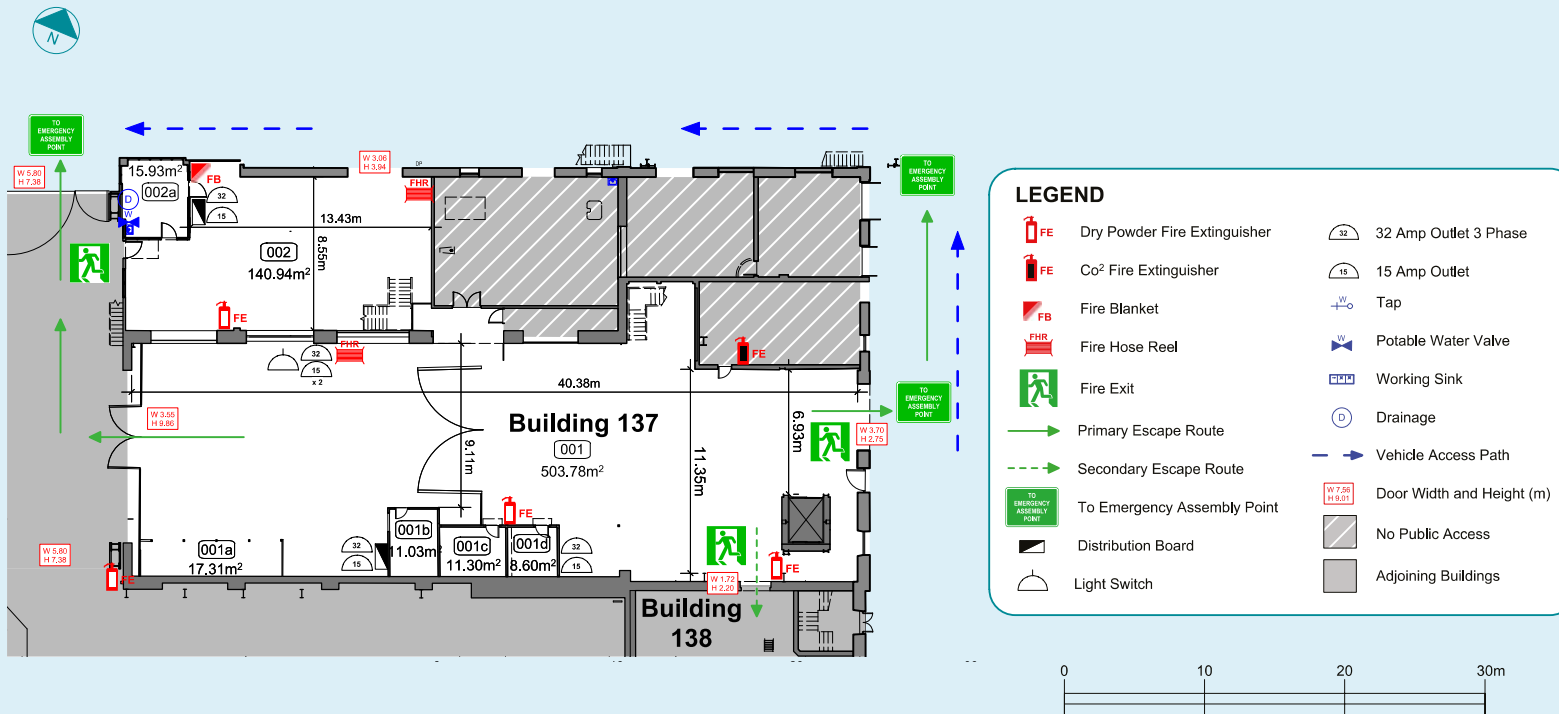
Surface: Concrete
Power: 5 x 15amp, 4 x 32amp
Toilets: Available in Building 150
Water: Available in Building 150

SIZE

Area: 717m²
Dimensions: Main space 40m x 11m
Secondary space: 13m x 8m
Height clearance: 8.5m

VENUE SPECIFIC INFORMATION

- Exit points x 3
- Can be used as back of house or bar/lounge space for Building 150



BUILDING 153 (BLADE ROOM)

Soon after completion of Buildings 139 and 140, a small room was added to the western end to house a specialist Turbine Blade Room.

Centrally placed across the junction between the two buildings. It appears to have been assembled from existing and ad hoc components.

The Blade Room continued to function until the closure of the dockyard in 1991.

EXAMPLES OF APPROPRIATE USE

Activations, temporary kitchen, filming and photography.

CAPACITY

100 pax standing
50 pax theatre style

SITE SPECIFICATIONS

Surface: Concrete

Power: 1 x 32amp

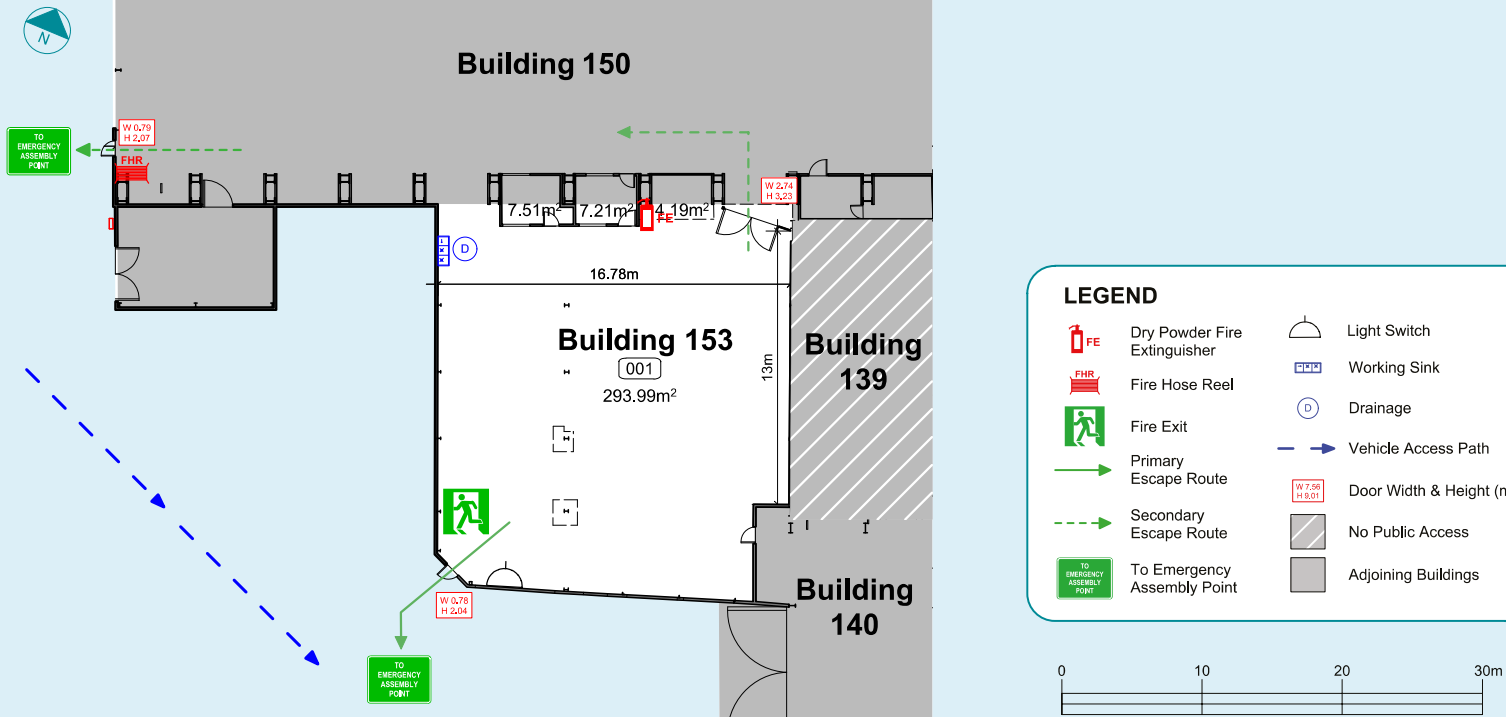
Toilets: Available in Building 150

Water: Available in Building 150

SIZE

Area: 294m²

Dimensions: 16m x 13m



BUILDING 140

The Machine Shops were major centres of activity throughout the entire dockyard operations.

The range of projects undertaken were vast. When Cockatoo Dockyard closed in 1991, Building 140 contained the largest lathe in Australia.

EXAMPLES OF APPROPRIATE USE

Corporate functions, gala dinners, music concerts, fashion shows, launches, activations, exhibitions, markets, fashion shows, filming and photography.

CAPACITY

2,000 pax standing
600 pax theatre style

SITE SPECIFICATIONS

Surface: Concrete

Power: 5 x 10amp, 5 x 32amp
(Access from surrounding buildings)

Toilets: Available in Building 150

Water: Available in Building 150

SIZE

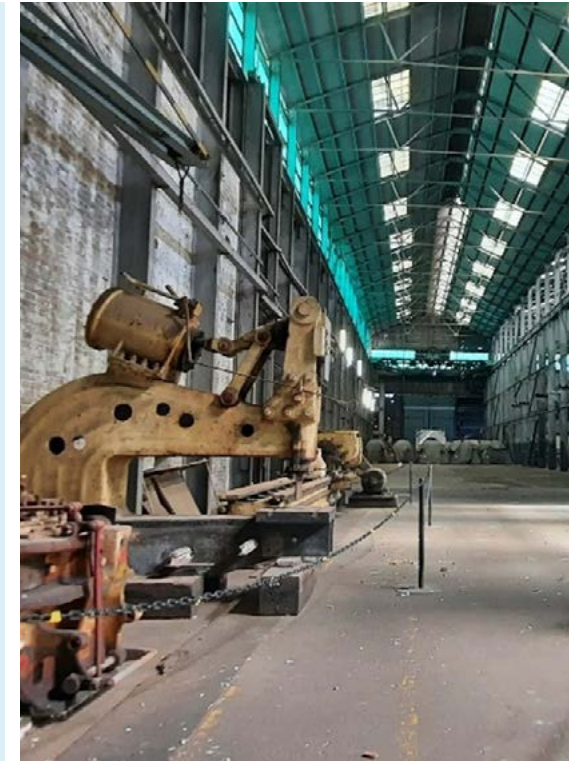
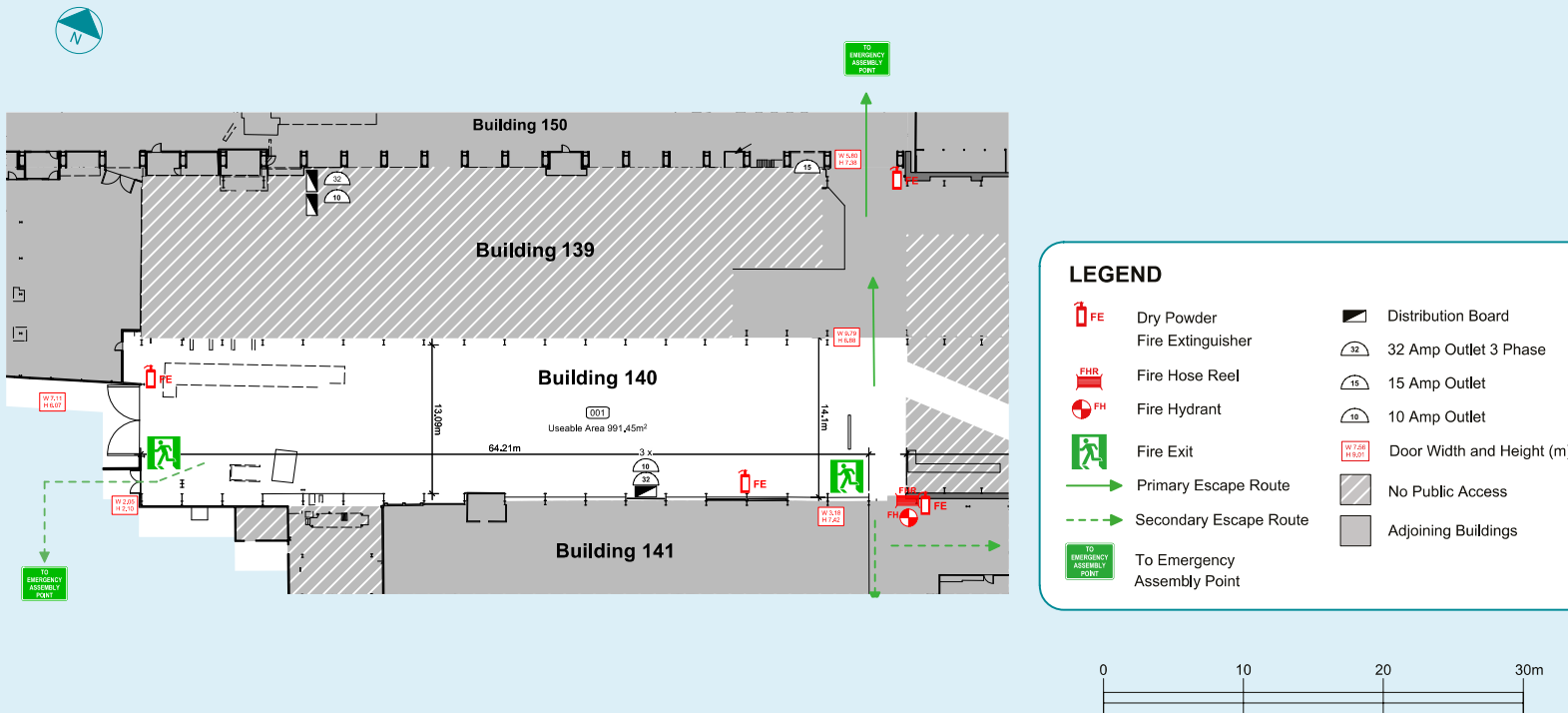
Area: 1,393m²

Dimensions:

Main space 64m x 14m

Secondary space 27.5m x 12.6m

Height clearance: 8.5m



BUILDING 142

Building 142, one of the various ‘shops’ throughout Cockatoo Island where other parts for fitting out a ship were made.

EXAMPLES OF APPROPRIATE USE

Filming and photography, markets, exhibitions and special events.

CAPACITY

500 pax standing
250 pax theatre style

SITE SPECIFICATIONS

Surface: Concrete

Power: 2 x 10amp, 2 x 15amp, 5 x 32amp

Toilets: Available in Buildings 150 and 119

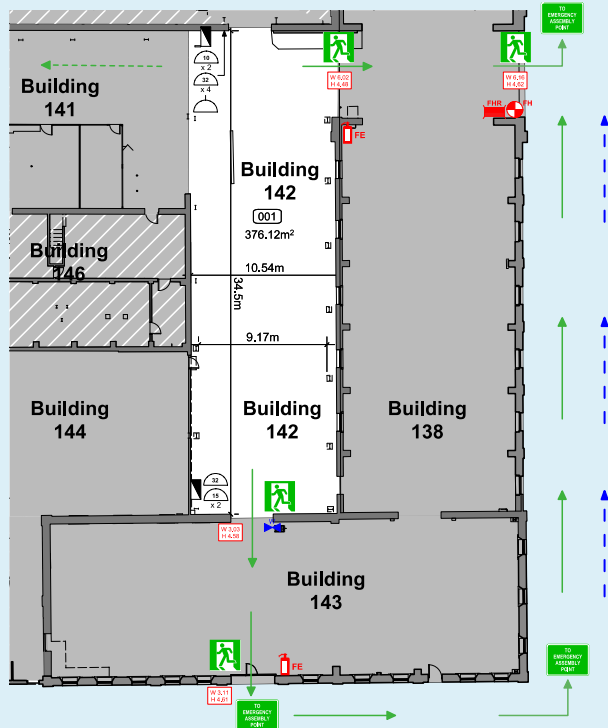
Water: Available

SIZE

Area: 376m²

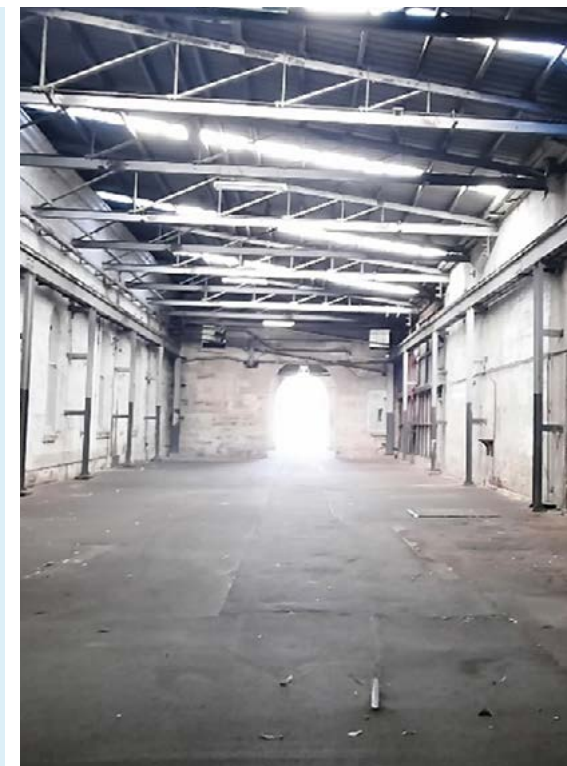
Dimensions: 34.5 x 10.5m

Height clearance: 4.4m



LEGEND

	Dry Powder Fire Extinguisher		32 Amp Outlet 3 Phase
	Fire Hose Reel		15 Amp Outlet
	Fire Hydrant		10 Amp Outlet
	Fire Exit		Light Switch
	Primary Escape Route		Potable Water Valve
	Secondary Escape Route		Vehicle Access Path
	To Emergency Assembly Point		Door Width & Height (m)
	Distribution Board		No Public Access
			Adjoining Buildings



BUILDING 143 (PUMP HOUSE)

Building 143 was originally the Southern Pavilion of Building 138.

Known as the Pump House, it was designed to accommodate the pumps and boilers which drained the Fitzroy Dock and powered the adjacent workshop machinery.

EXAMPLES OF APPROPRIATE USE

Filming and photography, music, markets, performances, exhibitions and special events.

CAPACITY

350 pax standing
100 pax theatre style

SITE SPECIFICATIONS

Surface: Concrete

Power: 2 x 15amp, 1 x 32amp
(Access from Building 142)

Toilets: Available in Buildings 150 and 119

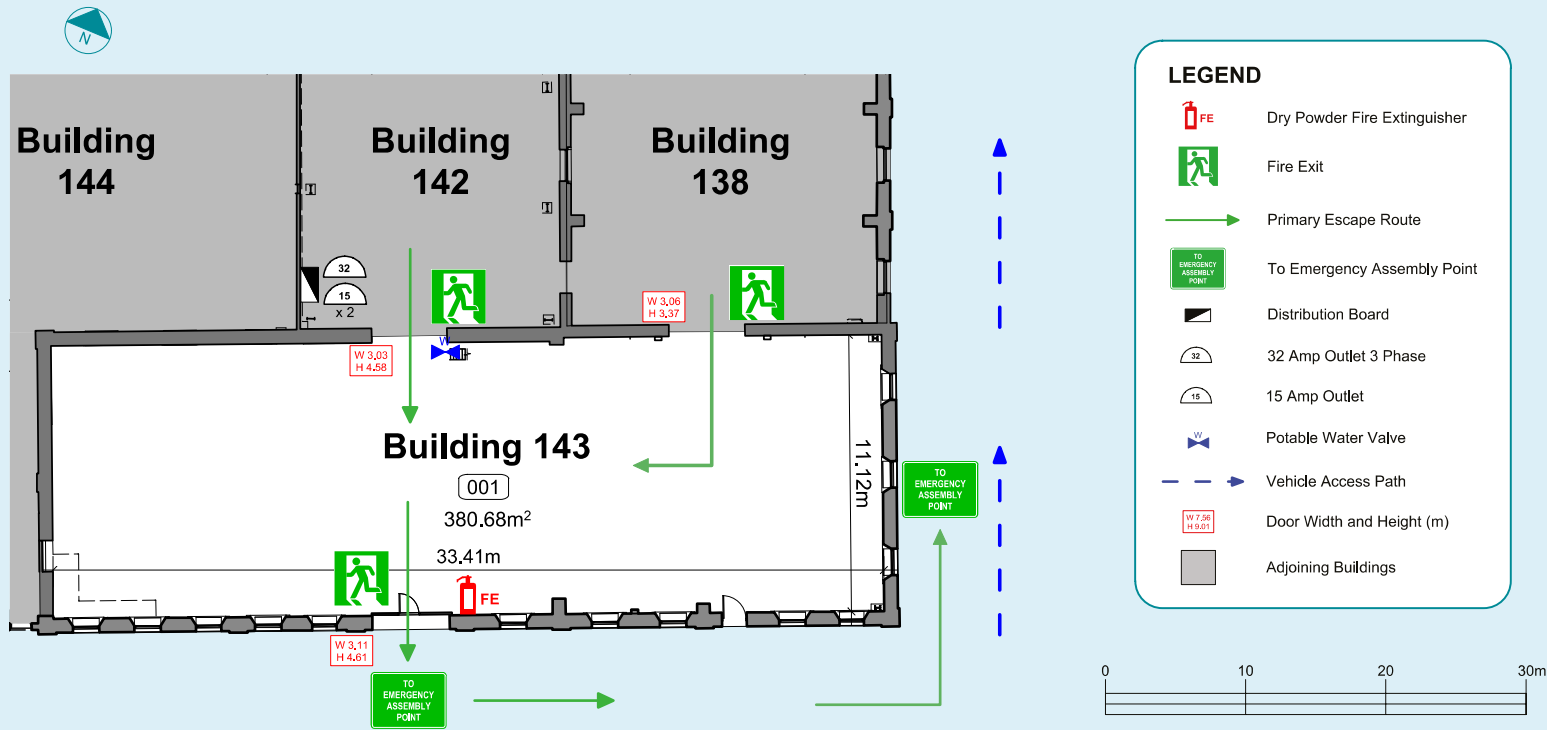
Water: Available (outside building)

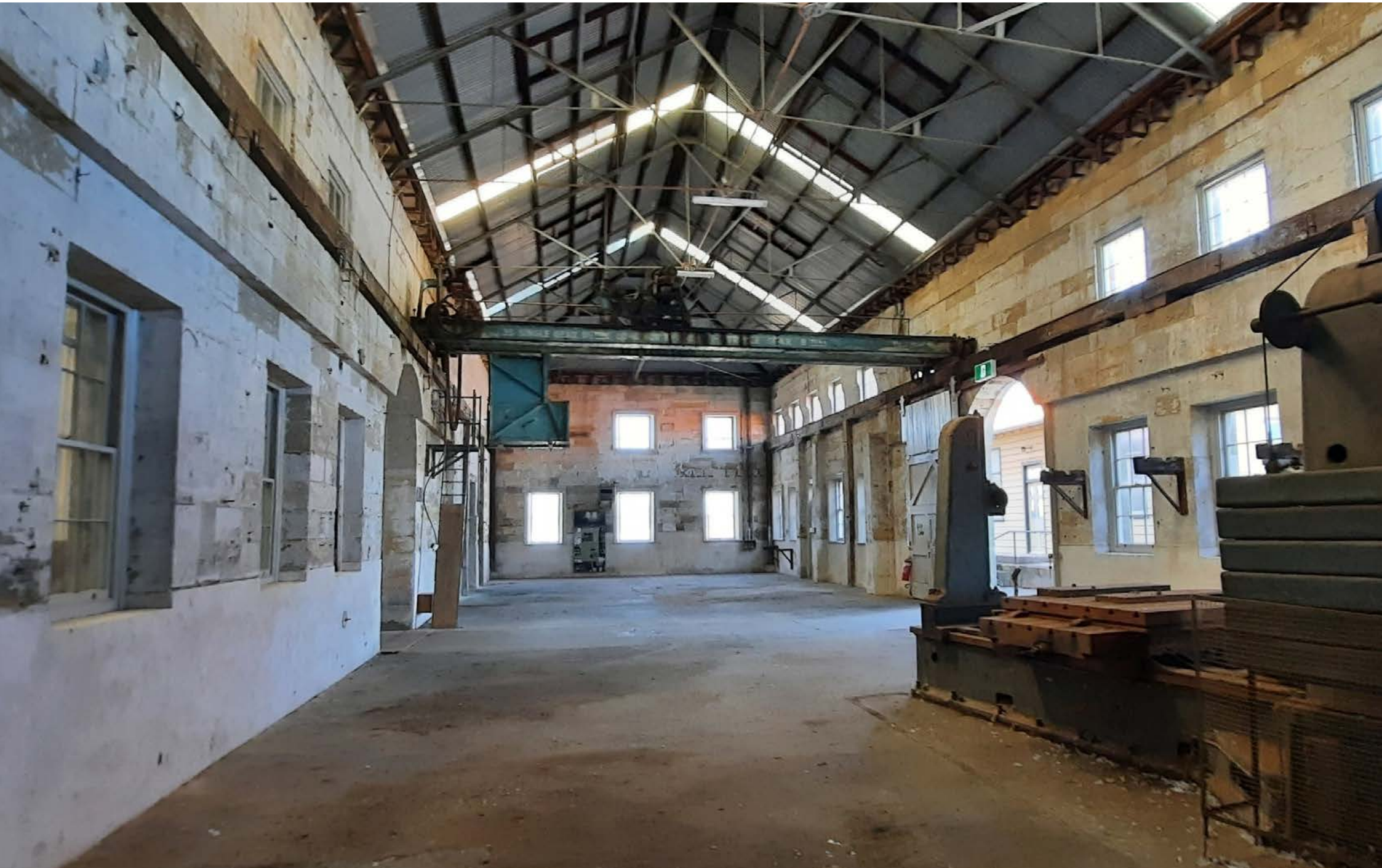
SIZE

Area: 380m²

Dimensions: 33m x 11m

Height clearance: 7.8m





EASTERN APRON

The Eastern Apron is a picturesque waterfront domain providing magnificent harbour views and a dramatic cliff-face backdrop.

This spot has a mix of grass and concrete, with some relics used during the island's shipping industry days still scattered on the Eastern Apron lawn. The venue is a functional open space that can be used as a site for large structures including stages, marquees and set builds, along with vehicle parking.

In the early years, 1871–1890, an old ship called the Vernon was anchored on the waterfront of the

Eastern Apron. The Vernon was a training ship for homeless, orphaned and wayward boys. During the Dockyard years, the Eastern Apron was a hub of shipbuilding, with many manufacturing workshops across the Eastern Apron. When Cockatoo Island ceased operating at the end of 1991, these buildings and most of the cranes were demolished.

EXAMPLES OF APPROPRIATE USE

Music concerts, launches, activations, outdoor food and beverage markets/festivals, filming and photography.

CAPACITY

- 6,000 pax standing
- Theatre style – Subject to event type

SITE SPECIFICATIONS

Surface: Grass and concrete

Toilets: Buildings 30, 150 and 119

Power: 4 x 10amp; 4 x 32amp

Water: Available in Buildings 124, 150 and 30

SIZE

Area: 15,000m²

Dimensions: 159m x 93m






















VENUE SPECIFIC INFORMATION

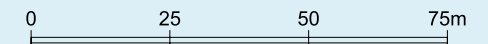
- 3m exclusion zone from cliff face
- No pegging on grassed areas – geo capping in situ (30cm)
- Uneven surfaces
- Maintaining pedestrian thoroughfare





LEGEND

-  Fire Hose Reel
-  Fire Hydrant (In Ground)
-  Fire Trailer
-  Primary Escape Route
-  Secondary Escape Route
-  To Emergency Assembly Point
-  Distribution Board
-  32 Amp Outlet 3 Phase
-  20 Amp Outlet
-  15 Amp Outlet
-  10 Amp Outlet
-  Stop Valve
-  Water Tap
-  Drainage
-  Vehicle Access Path
-  First Aid
-  Defibrillator
-  Toilets
-  Viewpoint
-  Lockers
-  Substation



BUILDING 124 (NAVAL STORE)

The Naval Store is a ground floor waterfront venue commanding impressive harbour and bridge views.

It features concrete floors, and exposed timber truss ceilings. The building's original use was as a tool room and tool store for the shipbuilding workshops. In 1916 it was converted to house a Mess Room in the upper floor and the ground floor was occupied by a Testing and Maintenance Department, where materials were variously

tested for performance and characteristics. In the 1930s the Pattern Shop was relocated to this building, where patterns were made for use in the Dockyard's Iron and Brass Foundries.

EXAMPLES OF APPROPRIATE USE

Cocktail events, exhibitions, displays, conferences, intimate dinners, launches, activations, filming, photography, and food and beverage support for Eastern Apron activations.

CAPACITY

200 pax standing
150 pax theatre style

SITE SPECIFICATIONS

Surface: Concrete

Power: 3 x 10amp, 2 x 15amp,
4 x 32amp

Toilets: Available in Building 119

Water: Available

SIZE

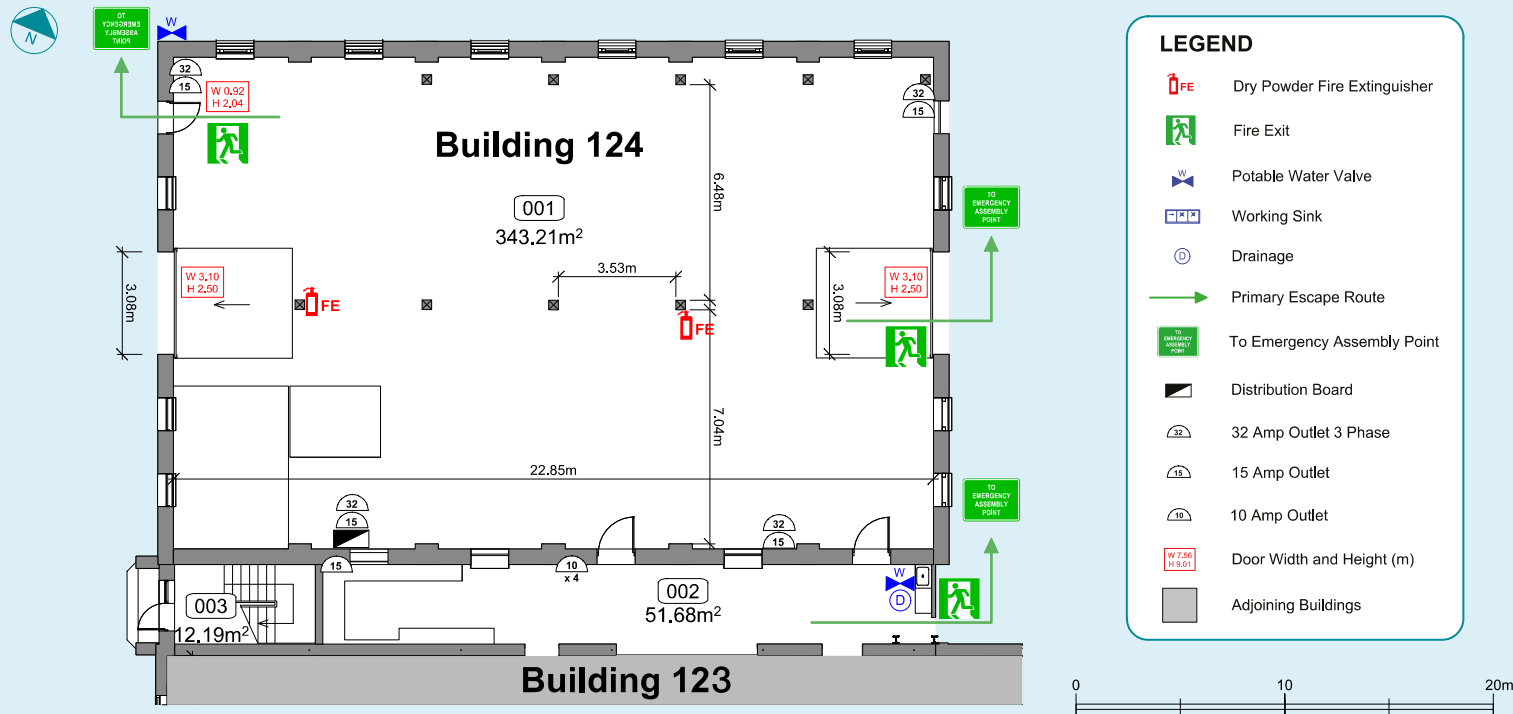
Area: 343m²

Dimensions: 22m x 14m

Height clearance: 3.8m

VENUE SPECIFIC INFORMATION

- Building 123 (Bolt Store) can be used as back of house
- Marquees are needed for any food preparation
- Roller doors at each end of building



BOLT WHARF

Originally part of timber made Cruiser Wharf, converted into a concrete wharf during the Second World War.

It is one of the largest wharfs associated with the operations of the island’s dockyard, with the eye-catching electric portal travelling jib crane being the newest and largest of the collection of cranes surviving on Cockatoo Island.

EXAMPLES OF APPROPRIATE USE

Cultural performances, launches, activations, outdoor food and beverage markets/festivals, filming and photography.

CAPACITY

4,000 pax standing
2,500 pax Theatre style

SITE SPECIFICATIONS

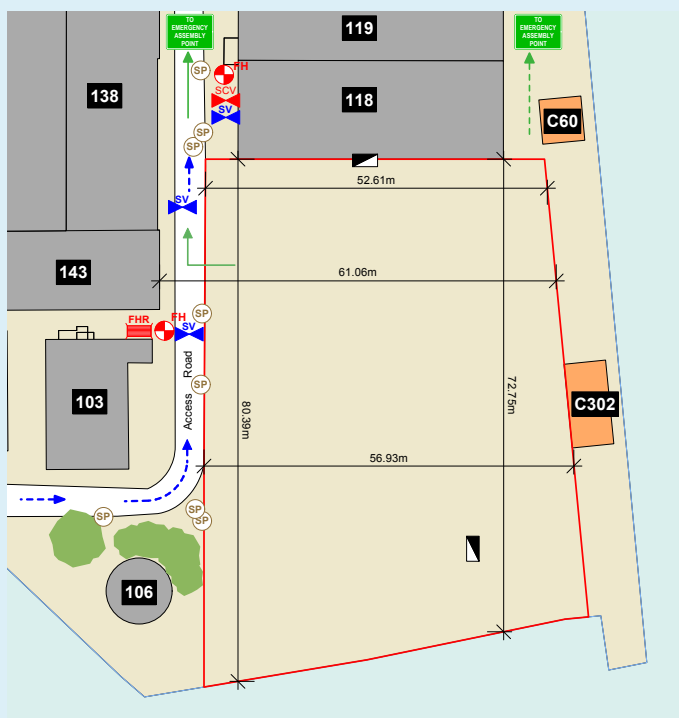
Surface: Concrete
Power: Distribution Board – low voltage 3 phase
Toilets: Available in Buildings 150 and 119
Water: Available

SIZE

Area: 3,048m²
Dimensions: 40m x 76.2m

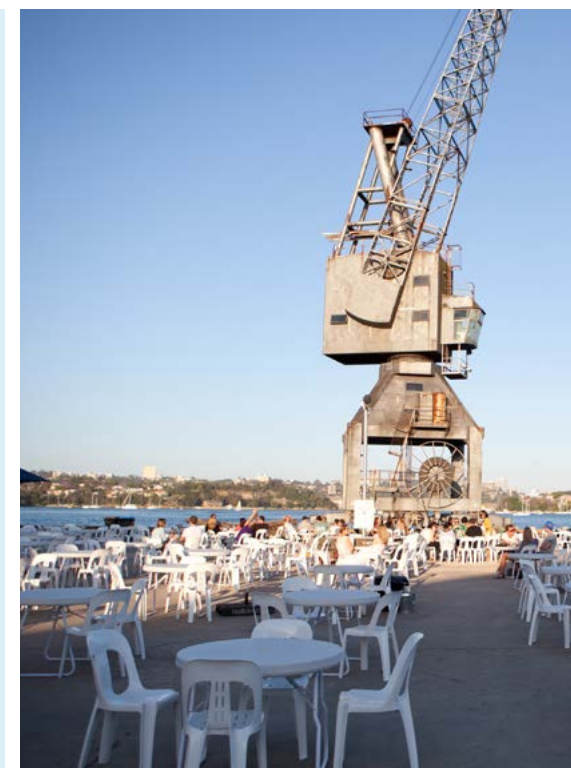
VENUE SPECIFIC INFORMATION

- Uneven surfaces
- Maintaining pedestrian thoroughfare
- Load restrictions near cranes



LEGEND

	Fire Hose Reel
	Fire Hydrant
	Sprinkler Control Valve
	Primary Escape Route
	Secondary Escape Route
	To Emergency Assembly Point
	Distribution Board
	Stop Valve
	Sewer Pit
	Vehicle Access Path



DOG LEG TUNNEL

Built in the Second World War to assist with the transportation of ship and machinery parts from one side of the island to the other. Additionally, during this time, it was also used as a bomb shelter.

EXAMPLES OF APPROPRIATE USE

Launches, activations, filming and photography.

CAPACITY

Subject to event type

SITE SPECIFICATIONS

Surface: Concrete and wood

Power: 32amp

Toilets: Available in Building 33

Water: Available

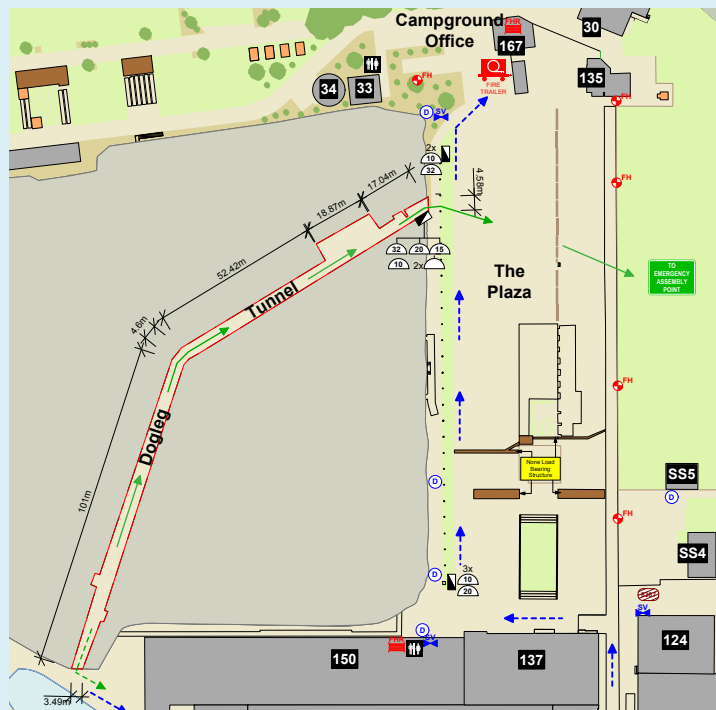
SIZE

Area: 925.5m²

Length: 193.93m

VENUE SPECIFIC INFORMATION

- Uneven surfaces
- Maintaining pedestrian thoroughfare
- Sandstone walls and timber support beams



LEGEND

- | | | | |
|--------------|-----------------------------|----|---------------------|
| FHR | Fire Hose Reel | 15 | 15 Amp Outlet |
| FH | Fire Hydrant | 10 | 10 Amp Outlet |
| FIRE TRAILER | Fire Trailer | SV | Stop Valve |
| | Primary Escape Route | W | Water Tap |
| | Secondary Escape Route | D | Drainage |
| | To Emergency Assembly Point | | Vehicle Access Path |
| | Distribution Board | | Toilets |
| | 32 Amp Outlet 3 Phase | | Substation |
| | 20 Amp Outlet | | |



SHIP DESIGN PRECINCT | BUILDING 6 (MOULD LOFT) MAIN FLOOR

The Mould Loft was the first structure to be built as part of the dockyard's expansion onto the crown of Cockatoo Island.

Built in 1911, it was where complete sets of full-scale templates for the fabrication of steel components were prepared for shipbuilding. Underneath the carpet on the top floor there are faint lines marking the outlines of ships built on Cockatoo Island. This building is a rare surviving example of a full-scale Mould Loft and

demonstrates the traditional methodology for shipbuilding, until the recent advent of accurate computer fairing and lofting techniques.

Cockatoo Island's Mould Loft, located on the upper Island in the historic Ship Design Precinct, is a blank canvas that can accommodate up to 250 pax across three adjoining venues.

This venue is managed by the Accommodation and Conferencing team. For more information, please contact conference@harbourtrust.gov.au.

EXAMPLES OF APPROPRIATE USE

Conferences, filming, photography, private and corporate events.

CONSIDERATIONS

- Limited accessibility
- Nearby tenants and campers

CAPACITY

- 100 pax standing
- 100 pax theatre style

SITE SPECIFICATIONS

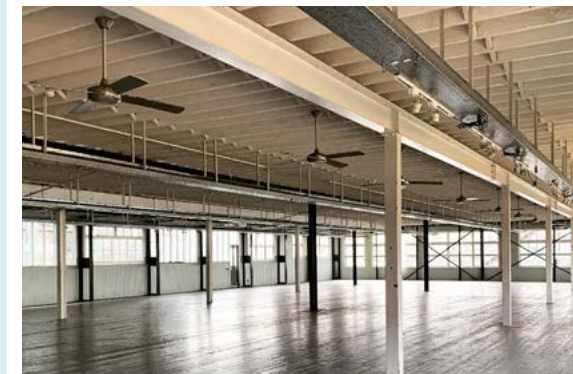
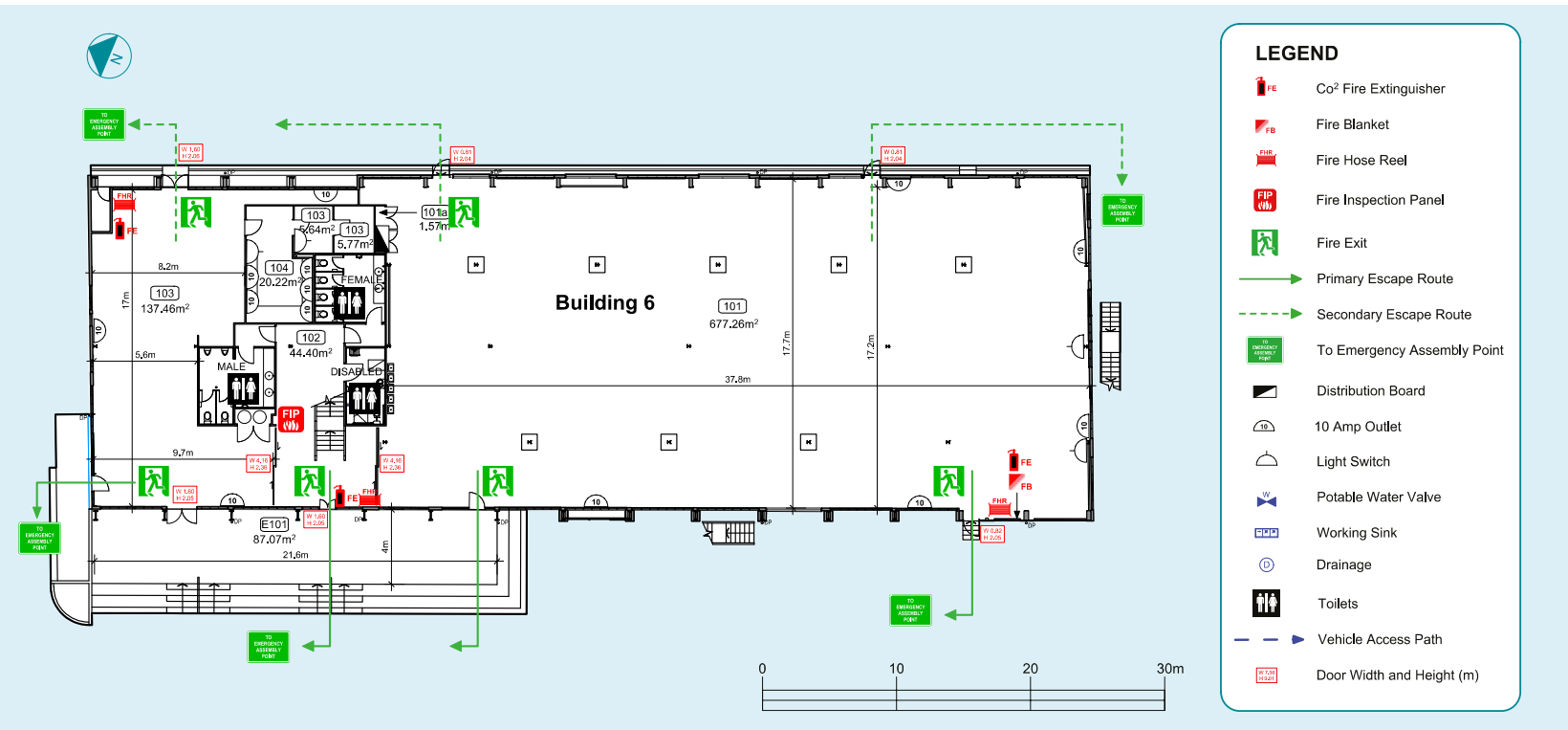
- Surface:** Wooden floor
- Power:** Available
- Toilets:** Available
- Water:** Available

SIZE

- Area:** 680m²
- Dimensions:** 37.8m x 17.5m

VENUE SPECIFIC INFORMATION

- Inclusions:**
- 100 chairs
- 10 trestle tables
- Ceiling fans



SHIP DESIGN PRECINCT | BUILDING 6 (MOULD LOFT) UPPER FLOOR

EXAMPLES OF APPROPRIATE USE

Conferences, filming, photography and cinema.

CONSIDERATIONS

- Limited accessibility
- Nearby tenants and campers

CAPACITY

100 pax standing
100 pax theatre style

SITE SPECIFICATIONS

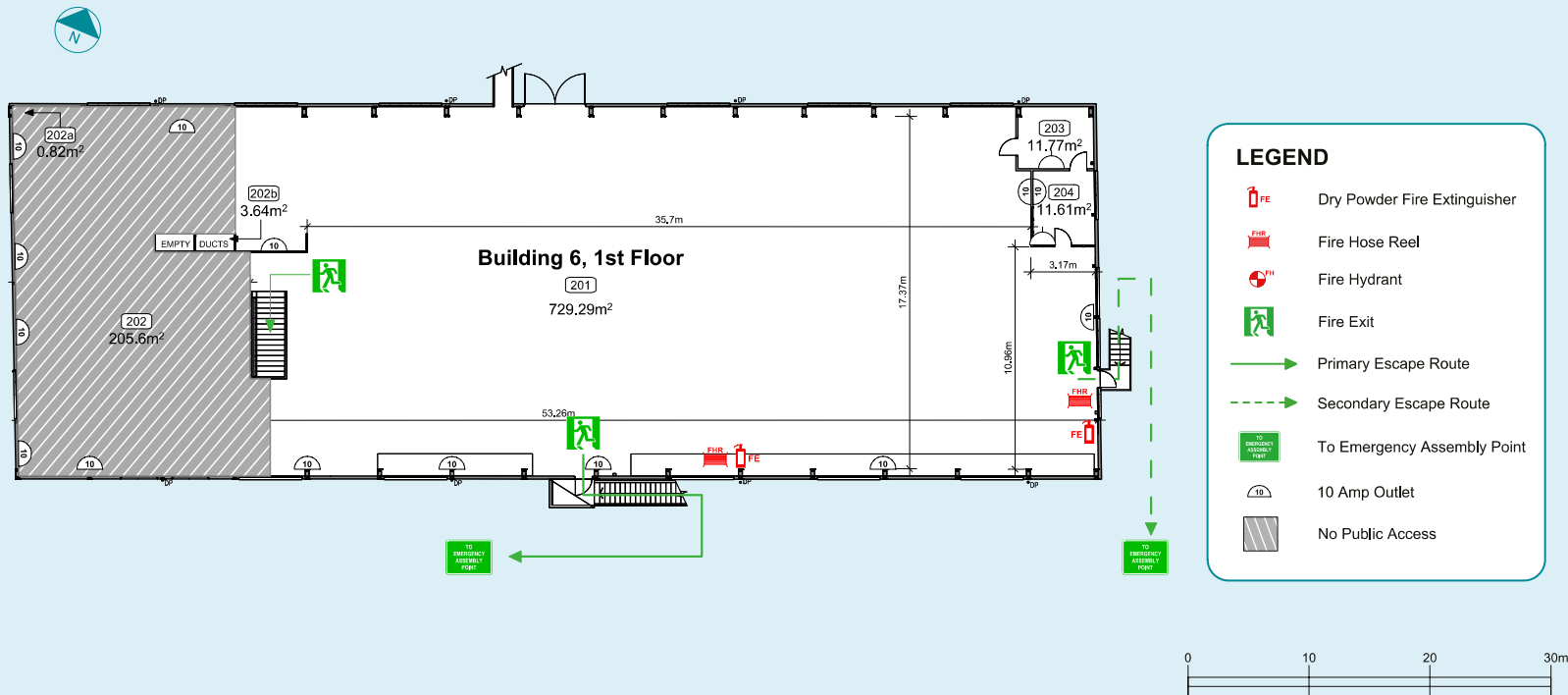
Surface: Carpet
Power: Available
Toilets: Available
Water: Available

SIZE

Area: 680m²
Dimensions: 35.7m x 17.3m

VENUE SPECIFIC INFORMATION

- Inclusions:**
- 100 white plastic chairs
 - DVD and Projector (DVD player only)
 - Ceiling fans



SHIP DESIGN PRECINCT | BUILDING 6 (MOULD LOFT) STUDIO SPACE

EXAMPLES OF APPROPRIATE USE

Workshops, small events, filming and photography.

CONSIDERATIONS

- Limited accessibility
- Nearby tenants and campers

CAPACITY

50 pax standing
30 pax theatre style

SITE SPECIFICATIONS

Surface: Wooden floor
Power: Available
Toilets: Available
Water: Available

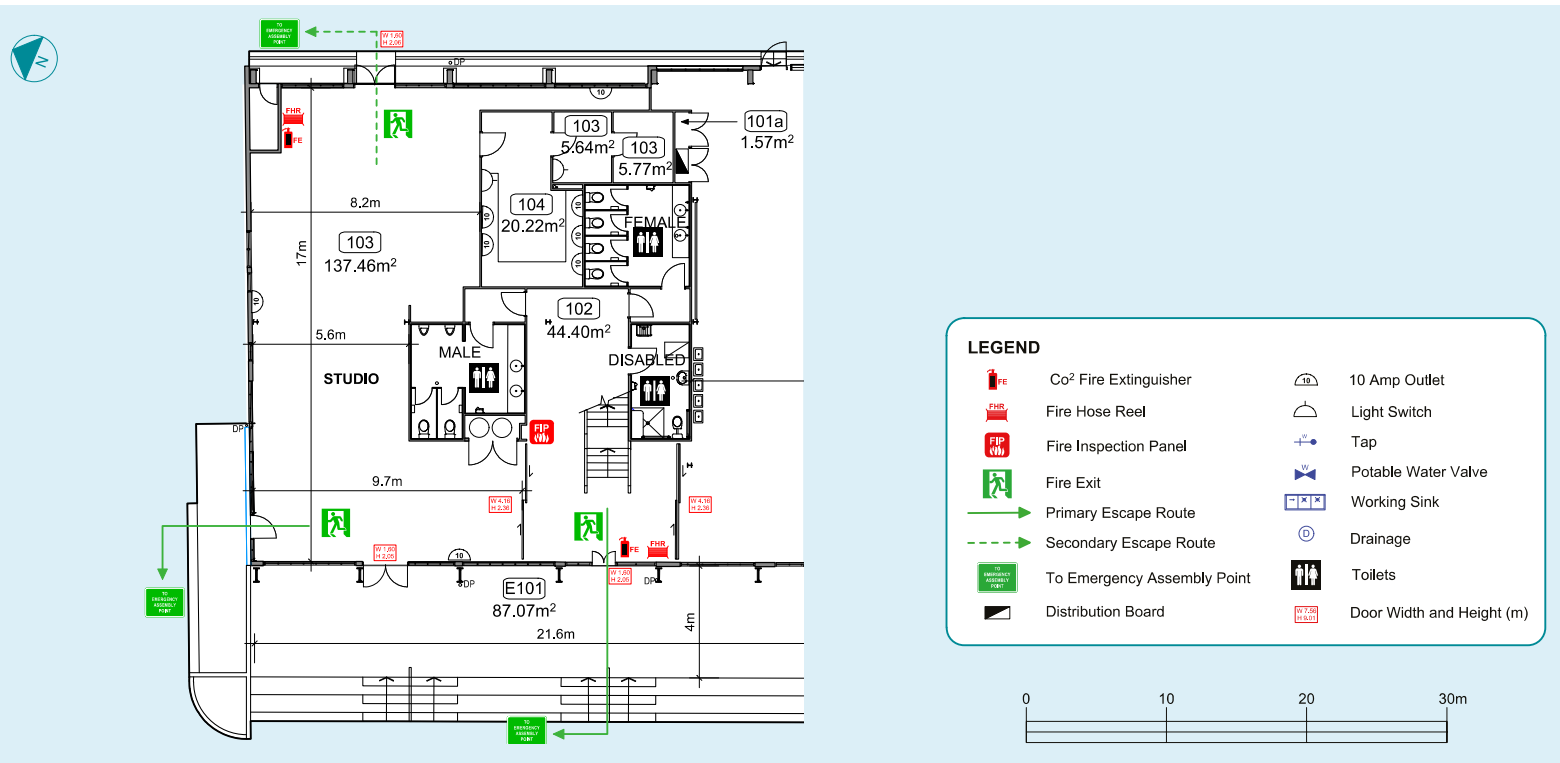
SIZE

Area: 137m²
Dimensions: 17m x 8m

VENUE SPECIFIC INFORMATION

Inclusions:

- 50 chairs
- 5 trestle tables
- Ceiling fans



CONVICT PRECINCT | COURTYARD (ENCLOSED)

Cockatoo Island was largely undisturbed until 1839 when NSW Governor Gipps chose it as the site for a new penal establishment as an alternative to Norfolk Island.

Gradually Cockatoo Island became the most extreme penal establishment of the colony, the home for the ‘worst of the worst’ – convicts who had since committed a second offence in the colonies, or those who had their ticket-of-leave cancelled and had to be accommodated. After the convict prison closed in 1869, the convict area became

an Industrial School for Girls. In 1888, it became a gaol once again, for male and female offenders. In the shipbuilding era, the precinct was ‘recycled’ as offices and altered into air-raid shelters and laboratories. On 31 July 2010, the Cockatoo Island Convict Site was inscribed on the UNESCO World Heritage List with 10 other heritage sites nationwide.

EXAMPLES OF APPROPRIATE USE

Small outdoor activations, exhibitions, filming and photography.

CONSIDERATIONS

- UNESCO World Heritage Listed
- Limited accessibility

CAPACITY

500 pax standing
Theatre style – Subject to event type

SITE SPECIFICATIONS

Surface: Gravel and sandstone
Power: 2 x 32amp

Toilets: Available in Building 6

Water: Available

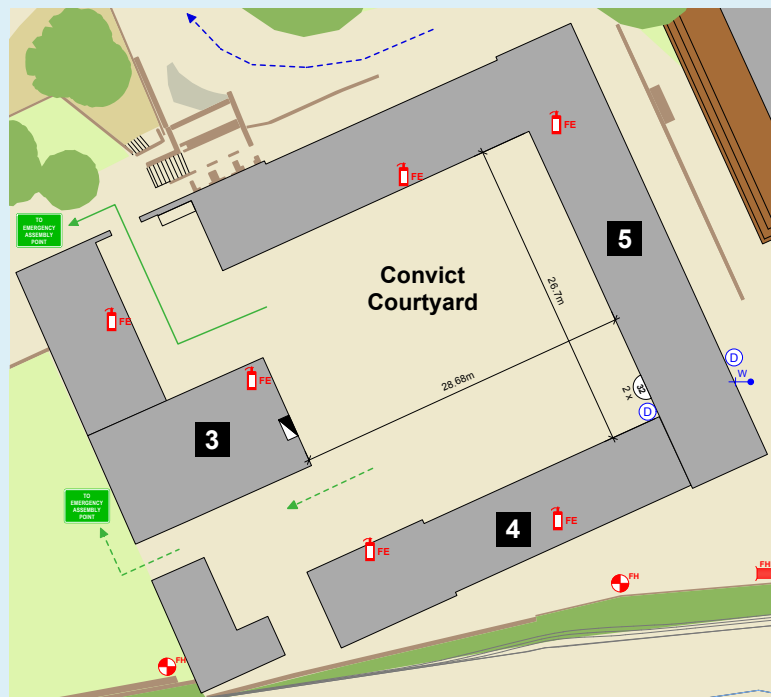
SIZE

Area: 1,009 m²

Dimensions: 28m x 26 m

VENUE SPECIFIC INFORMATION

- Uneven surfaces
- Maintaining pedestrian thoroughfare



LEGEND

- FE Dry Powder Fire Extinguisher
- FHR Fire Hose Reel
- FH Fire Hydrant
- Primary Escape Route
- Secondary Escape Route
- TO EMERGENCY ASSEMBLY POINT
- Distribution Board
- 32 Amp Outlet 3 Phase
- Tap
- Drainage
- Vehicle Access Path



CONVICT PRECINCT | COURTYARD (GRASSED)

EXAMPLES OF APPROPRIATE USE

Small outdoor activation, filming and photography.

CONSIDERATIONS

- UNESCO World Heritage Listed
- Limited accessibility

CAPACITY

400 pax standing
Theatre style – Subject to event type

SITE SPECIFICATIONS

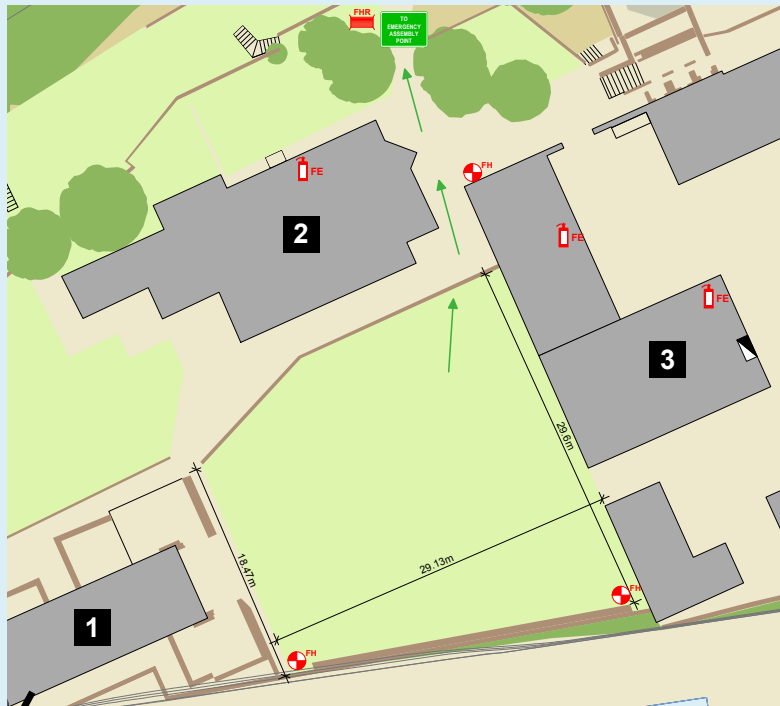
Surface: Grass
Power: 3amp from Building 2
Toilets: Available in Building 6
Water: Available

SIZE

Area: 737m²
Dimensions: Longer end 29.6m x 29.13m
Shorter end 29.6m x 18.47m

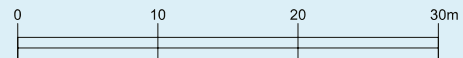
VENUE SPECIFIC INFORMATION

- Uneven surfaces
- Maintaining pedestrian thoroughfare
- No pegging
- No heavy or large structures



LEGEND

- Dry Powder Fire Extinguisher
- Fire Hose Reel
- Fire Hydrant
- Primary Escape Route
- To Emergency Assembly Point
- Distribution Board



CONVICT PRECINCT | BUILDING 3 (MESS HALL)

EXAMPLES OF APPROPRIATE USE

Filming and photography.

CONSIDERATIONS

- UNESCO World Heritage Listed
- Limited accessibility

CAPACITY

50 pax standing
30 pax theatre style

SITE SPECIFICATIONS

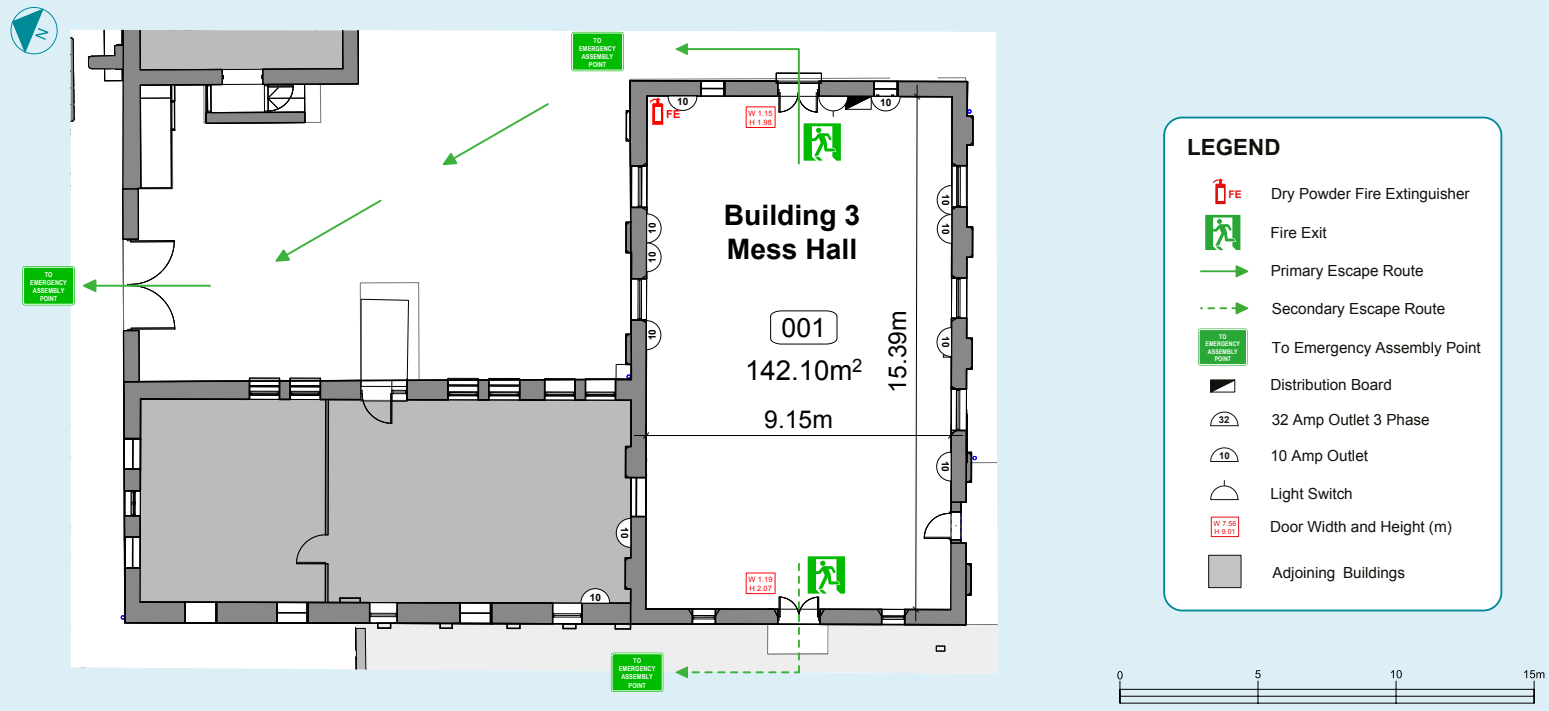
Surface: Wooden floor
Power: Available
Toilets: Available in Building 6
Water: Available

SIZE

Area: 142m²
Dimensions: 9.15m x 15.4m

VENUE SPECIFIC INFORMATION

- Sandstone walls
- Glass in windows



CONVICT PRECINCT | BUILDING 4 (INFIRMARY/CAMPGROUND CINEMA)

EXAMPLES OF APPROPRIATE USE

Filming, photography and movie viewings.

CONSIDERATIONS

- UNESCO World Heritage Listed
- Limited accessibility

CAPACITY

35 standing
35 theatre style

SITE SPECIFICATIONS

Surface: Wooden floor
Power: Available
Toilets: Available in Building 6
Water: Available

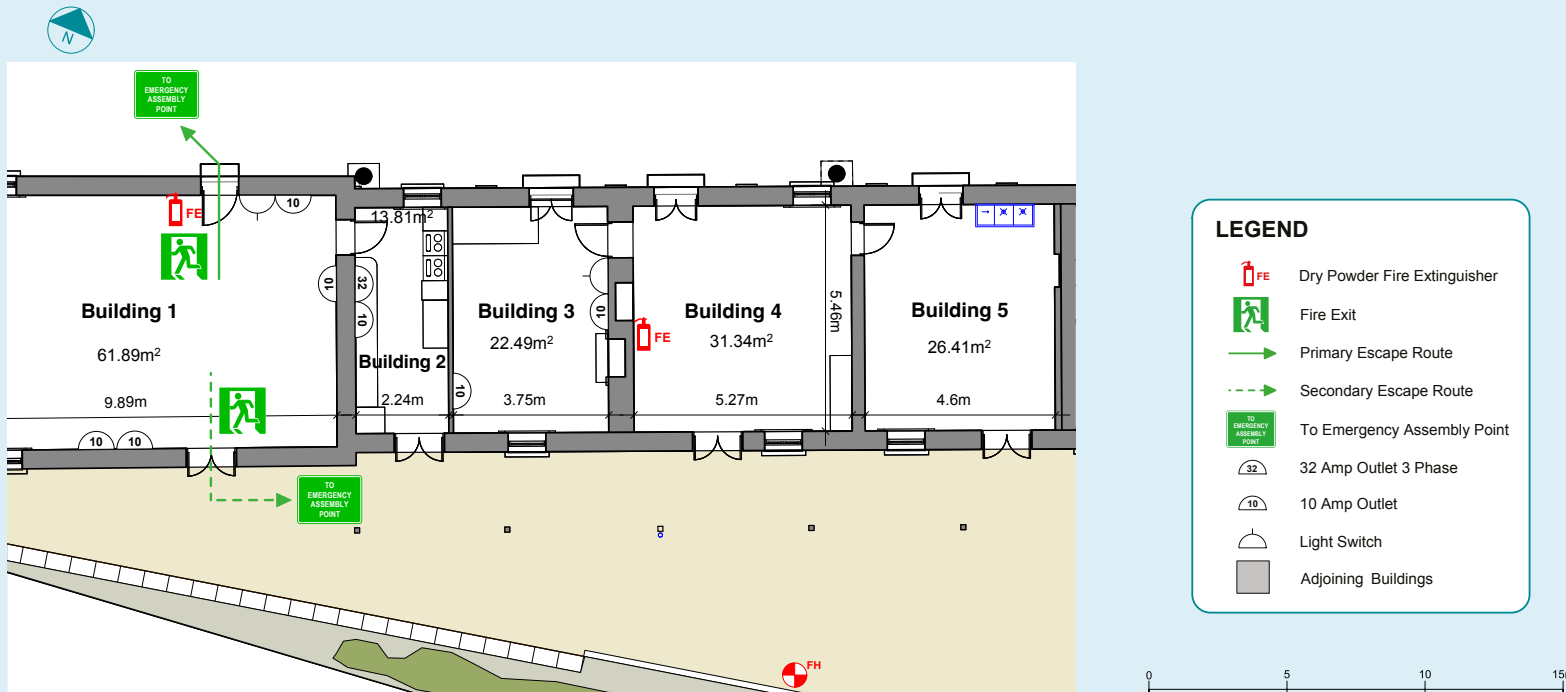
SIZE

Area: 60m²
Dimensions: 6.2m x 9.9m

VENUE SPECIFIC INFORMATION

- Inclusions:**
- Projector, 5m wide screen,
 - DVD player and surround sound
 - 25 Mojo bean bag lounge chairs
 - Trestle table and chairs (available upon request)

This venue is managed by the Accommodation and Conferencing team. For more information, please contact conference@harbourtrust.gov.au.



BILOELA LAWN

The lawns of Biloea House boast panoramic views across Sydney Harbour. Situated on the highest point on the Island, the original building was built by convicts from island cut sandstone.

The house and grounds entertained officers from visiting Royal Navy ships and housed two families of the first Superintendents.

EXAMPLES OF APPROPRIATE USE

Weddings, photography, filming, small activations and music.

CONSIDERATIONS

- Wedding bookings for this venue must be in conjunction with a confirmed reception at either of the two cafés on the island.

CAPACITY

200 pax standing
Theatre style – Subject to event type

SITE SPECIFICATIONS

Surface: Grass

Power: Available

Toilets: Inside Building 22 (Biloea House) and Building 14

Water: Available

SIZE

Area: 630m²

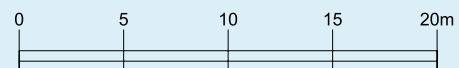
VENUE SPECIFIC INFORMATION

- Uneven surfaces
- Maintaining pedestrian thoroughfare



LEGEND

- Fire Hose Reel
- Fire Hydrant
- 32 Amp Outlet 3 Phase
- 15 Amp Outlet
- Primary Escape Route
- Secondary Escape Route
- To Emergency Assembly Point
- Toilets



FOR MORE INFORMATION

Please contact the Harbour Trust Events and Venue team at licensing@harbourtrust.gov.au or visit www.harbourtrust.gov.au/venue-hire to fill in an application form.



Harbour Trust



Australian Government
Sydney Harbour Federation Trust

 Cockatoo
Island.



Headland
Park
MOSMAN

NORTHHEAD
— SANCTUARY MANLY —

SUB BASE
PLATYPUS